

Crash Test Barrier

IIHS Moving Deformable Barrier V2 for Side Impact Crashworthiness Evaluation

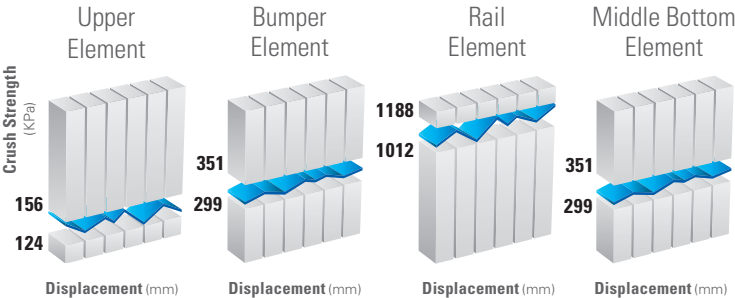
Description

The Plascore IIHS Moving Deformable Barrier V2 (October 2020) is used for full scale, side impact crash testing in the automotive safety field. The performance is intended to provide a measurement tool with sufficient precision to ensure repetitive and correlative results that reflect the protective performance of a motor vehicle with respect to human occupants.

Construction

- Upper Element 1.3-1/1-3003
- Rail Element 4.0-3/8-3003
- Middle Bottom Element 1.8-3/4-3003
- Bumper Element 1.8-3/4-3003
- Base Plate 0.8mm 5052 H32
- Top Cladding 0.7mm 5052 H32
- Bumper Cladding 3.0mm 5052 H34

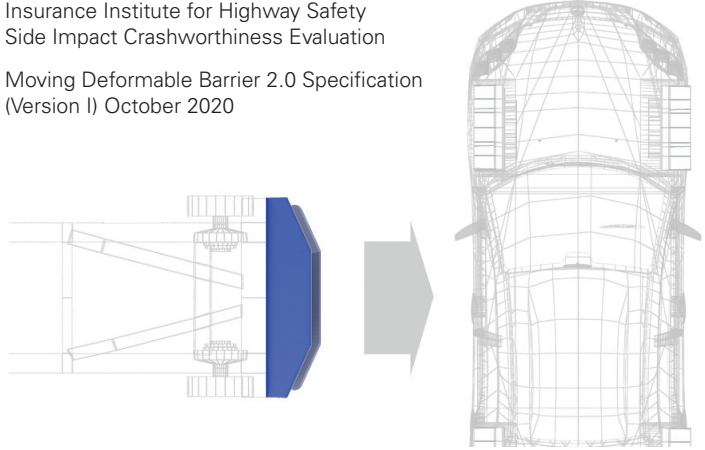
Crush Properties (Static)



Specifications

Insurance Institute for Highway Safety Side Impact Crashworthiness Evaluation

Moving Deformable Barrier 2.0 Specification (Version I) October 2020



Availability

Plascore Item #59212
 Available from distribution locations worldwide.
 Includes Certificate of Conformance and Test Data.
 Paint: Grey or Blue anti-reflective paint standard. Custom paint configurations available.
 Packaging: Individual cardboard container: 1750mm x 900mm x 520mm
 Packaged Weight: 22 kg



Plascore, Inc., employs a quality management system that is Nadcap, AS9100, ISO 9001 and ISO 14001 certified.

IMPORTANT NOTICE: The information contained in these materials regarding Plascore's products, processes, or equipment, is intended to be up to date, accurate, and complete. However, Plascore cannot warrant that this is always the case. Accordingly, it is a purchaser's or user's responsibility to perform sufficient testing and evaluation to determine the suitability of Plascore's products for a particular purpose. Information in these materials and product specifications does not constitute an offer to sell. Your submission of an order to Plascore constitutes an offer to purchase which, if accepted by Plascore, shall be subject to Plascore's terms and conditions of sale. PLASCORE MAKES NO WARRANTIES OF ANY KIND REGARDING THESE MATERIALS OR INFORMATION, EITHER EXPRESS OR IMPLIED, INCLUDING WITHOUT LIMITATION THE IMPLIED WARRANTIES OF MERCHANTABILITY AND FITNESS FOR A PARTICULAR PURPOSE. Plascore owns and shall retain all worldwide rights in its intellectual property, and any other trademarks used in these materials are the property of their respective owners. The information in these materials shall not be construed as an inducement, permission, or recommendation to infringe any patent or other intellectual property rights of any third parties.



Corporate Headquarters

Plascore Incorporated
 615 N. Fairview St.
 Zeeland, MI 49464-0170
 Phone (616) 772-1220
 Toll Free (800) 630-9257
 Fax (616) 772-1289
 Email sales@plascore.com
 Web www.plascore.com

Europe

Plascore GmbH&CoKG
 Feldborn 6
 D-55444 Waldlaubersheim
 Germany
 Phone +49(0) 6707-9143 13
 Fax +49(0) 6707-9143 40
 Email sales.europe@plascore.com
 Web www.plascore.de