

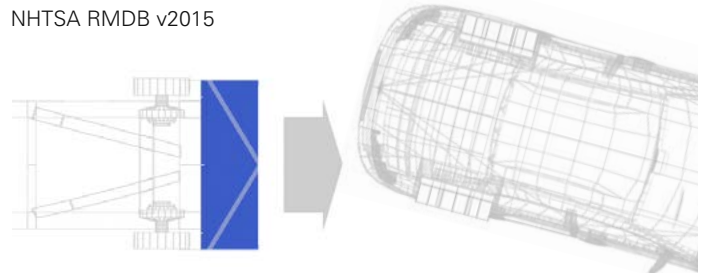


NHTSA Research Mobile Deformable Barrier

for Frontal Oblique Crashworthiness Evaluation

Specifications

NHTSA RMDB v2015



Availability

Full Width: Item Number 48723

Packaging: Individual cardboard container 2340mm X 1170mm X 712mm
Packaged Weight: 200kg

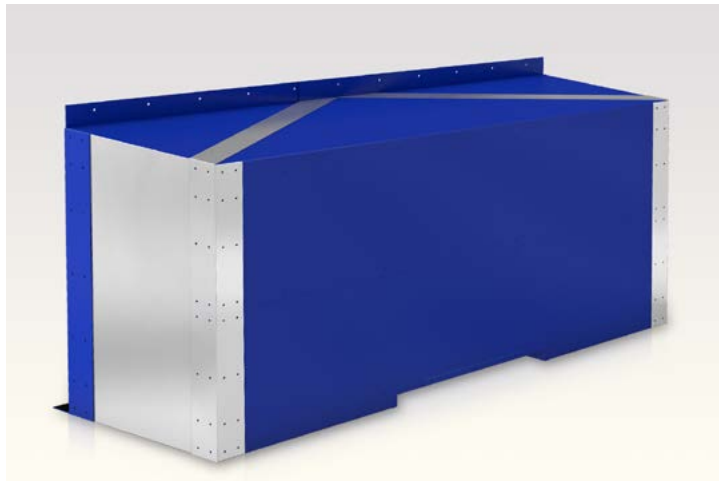
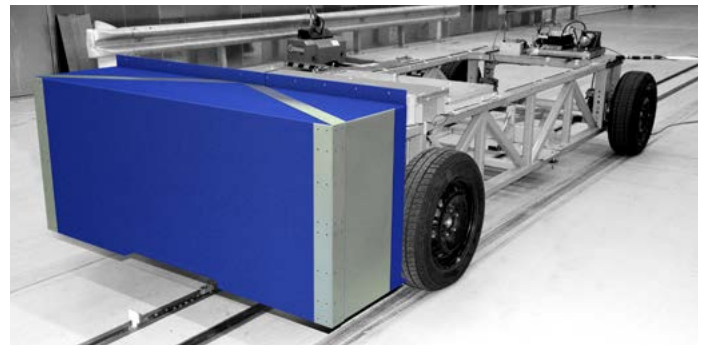
Half Width: Item Number 48724

Packaging: Individual cardboard container 1320mm X 1170mm X 712mm
Packaged Weight: 136kg

Available from distribution locations worldwide.

Includes Certificate of Conformance and Test Data.

Paint: Grey or Blue anti-reflective paint standard. Custom paint configurations available.



Description

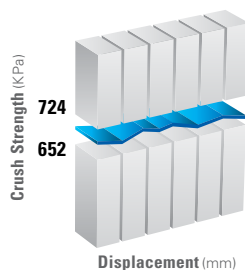
One of several certified honeycomb barriers, the Plascore NHTSA Oblique Mobile Deformable Barrier is used for full-scale crash testing in the automotive safety field. The performance is intended to provide a measurement tool with sufficient precision to ensure repetitive and correlative results to reflect the protective performance of a motor vehicle with respect to occupants. Plascore offers the NHTSA OMDB in both full width and half width configurations.

Construction

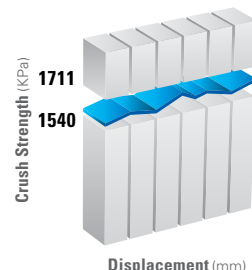
- Front Core 1/4" cell 5052 alloy
- Rear Core 1/4" cell 3003 alloy
- Cladding Sheets - NHTSA Approved Aluminum

Crush Properties

Front Deformable Core



Rear Deformable Core



Plascore, Inc., employs a quality management system that is Nadcap, AS9100, ISO 9001 and ISO 14001 certified.

IMPORTANT NOTICE: The information contained in these materials regarding Plascore's products, processes, or equipment, is intended to be up to date, accurate, and complete. However, Plascore cannot warrant that this is always the case. Accordingly, it is a purchaser's or user's responsibility to perform sufficient testing and evaluation to determine the suitability of Plascore's products for a particular purpose. Information in these materials and product specifications does not constitute an offer to sell. Your submission of an order to Plascore constitutes an offer to purchase which, if accepted by Plascore, shall be subject to Plascore's terms and conditions of sale. **PLASCORE MAKES NO WARRANTIES OF ANY KIND REGARDING THESE MATERIALS OR INFORMATION, EITHER EXPRESS OR IMPLIED, INCLUDING WITHOUT LIMITATION THE IMPLIED WARRANTIES OF MERCHANTABILITY AND FITNESS FOR A PARTICULAR PURPOSE.** Plascore owns and shall retain all worldwide rights in its intellectual property, and any other trademarks used in these materials are the property of their respective owners. The information in these materials shall not be construed as an inducement, permission, or recommendation to infringe any patent or other intellectual property rights of any third parties.



Corporate Headquarters

Plascore Incorporated
615 N. Fairview St.
Zeeland, MI 49464-0170

Phone (616) 772-1220
Toll Free (800) 630-9257
Fax (616) 772-1289
Email sales@plascore.com
Web www.plascore.com

Europe

Plascore GmbH&CoKG
Feldborn 6
D-55444 Waldlaubersheim
Germany

Phone +49(0) 6707-9143 0
Fax +49(0) 6707-9143 40
Email sales.europe@plascore.de
Web www.plascore.de